

LUDBROOKS LTD.

CHARLES STREET — Phone 2 1031

Ludbrooks have maintained a Tradition of Service to the Launceston Public over the last 65 years.

We are proud of our heritage as "THE HOUSE OF SERVICE AND VALUE".

ANDREW DUNCAN PTY. LTD.

SMART SHOES for ALL OCCASIONS

WATCH OUR WINDOWS

84 George Street. Phone 2 2878

E. J. BOCK

Phone 4 1551

PAINTER and DECORATOR
3 CHARLES STREET SOUTH
FOR REPAIRS AND RENOVATIONS
TOWN AND COUNTRY

DEAN'S BAKERIES

Registered Manufacturers

PROCERA, SLIMMING and DIABETIC BREADS

133 ST. JOHN ST.
Phone 2 3476

SLICED & WRAPPED
a Specialty

66 CHARLES ST.
Phone 2 3071

LADY ELIZABETH HATS

HIGH CLASS MILLINER

90 Elizabeth Street. Phone 2 3097

LOUIS VERMESY

UPHOLSTERER

Specialists in All Work

179 St. John Street. Phone 2 3422

ALLGOODS

132 CHARLES STREET

SPECIALISTS IN WORK CLOTHES AND FOOTWEAR

Tents, Flies and all Camping Equipment

YOUNGER & BROWN

PTY. LTD.

MONUMENTAL MASONS

Carr Villa Street,
LAUNCESTON
Telephone 2 2368

C. T. FINNEY & SONS

PTY. LTD.

FUNERAL DIRECTORS

16 BRISBANE ST., LAUNCESTON

Telephone 2 2368

Reeman & Manning

PTY. LTD.

44 CAMERON STREET

HOLDEN CARS...

...BEDFORD TRUCKS

Phone: 2 1957

R. H. WATSON & SON

99A St. John Street, Launceston

WATCH SPECIALISTS &
JEWELLERS

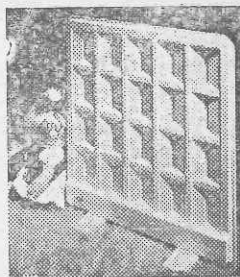
COMFORT ZONE YOUR HOME WITH LOW
COST CENTRAL HEATING!

7 DAYS FREE
TRIAL

with the all new
ELECTROLUX

OIL FILLED
ELECTRIC
RADIATORS

at a price YOU
can afford!



POWELLS

ELECTRICAL SERVICE PTY. LTD.
69 York Street, Launceston

EXAMINER

St. John's Parish Messenger

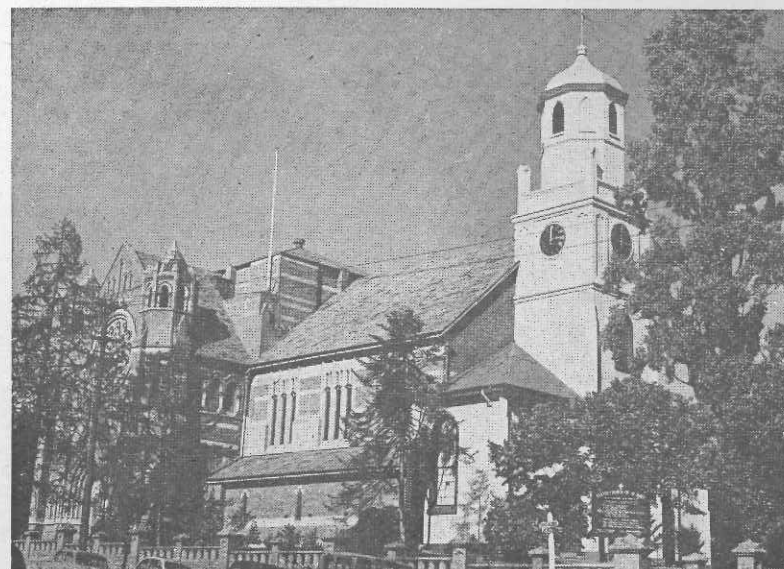
Monthly News from the Mother Church of Launceston, Tasmania.

No. 172

JULY, 1965

CLERGY

Rector: Canon H. A. Jerrim, Th.L., C.F. Phone 2 3186.
Assistant Curate: Rev. T. G. Cowell, Th.L. Phone 2 1510.
Organist: Miss Dorothy Glover, A.R.C.O., A.R.C.M. Phone 2 4988



THE RECTOR'S LETTER

My Dear Friends,

Many of you are engaged in filling in a green form which will be sent down to a gentleman in Hobart called the Deputy Commissioner of Taxation by 31st July. In this statement we are required to state our income for the past year and are permitted to make and claim certain allowances for our dependants and for various expenses. In a sense we are rendering an account of what we have done with our income and how we have applied it.

It is the end of the financial year so far as the Church is concerned and at the end of this month the Annual Meeting of the Congregation will be held. At this meeting the Vestry will render an account of the income of the Church and how they have used it. The Treasurer will report on how much we are overdrawn at the Bank.

As this is a time of review, maybe we could contemplate another kind of statement which could be rendered in this way:—

Received—

God's blessings.
Our Home.
Security.
Health.
Friends, etc.

Expended—

Service in the Church.
Participation in Church worship.
Private Prayer.
Service in the Community.
Loving one's neighbour.

Are we in debt or credit? I would suggest that we are always in God's debt. The only way we can attempt to discharge that debt is by more active participation in the matters which we have listed on the expended side. The saying "If God loved you as much as you loved God" is inscribed over the entrance to a London Church and is a challenge to all who enter the Church. These words challenge us in the terms of this letter and the rendering of an account of our lives and service to God.

To the many who are sick at this time or in trouble of any kind we offer our sympathy and prayers for God's blessings in the days ahead.

Yours sincerely,

HENRY A. JERRIM.

CALENDAR FOR JULY

- 4 **Third Sunday after Trinity.** 8 a.m. Holy Communion. Corporate Communion for those confirmed in recent years. 9.45 a.m. Sunday School. 11 a.m. Holy Communion. 7 p.m. Evensong.
- 6 Tuesday, 7.45 p.m. G.F.S.
- 7 Wednesday, 10.30 a.m. Holy Communion. 2.45 p.m. M.M.A.
- 8 Thursday, 8 p.m. Women's Guild at the home of Mrs. White, Wyett St. 8 p.m. Choir Practice.
- 11 **Fourth Sunday after Trinity.** 8 a.m. Holy Communion. 9.45 a.m. Sunday School. 11 a.m. Matins. 7 p.m. Evensong.
- 12 Monday, 2.45 p.m. St. Luke's Hospital Auxiliary at the Parish Hall.
- 13 Tuesday, 6 p.m. Men's Tea at "The Embassy".
- 14 Wednesday, 10.30 a.m. Holy Communion (M.U.). 7.30 p.m. Vestry.
- 15 Thursday, 8 p.m. Annual Meeting of the Choir.
- 18 **Fifth Sunday after Trinity.** 8 a.m. Holy Communion and Communion Breakfast. 9.45 a.m. Family Service. 11 a.m. Holy Communion. 7 p.m. Evensong.
- 20 Tuesday, 8 p.m. Evening Mothers' Union.
- 21 Wednesday, 10.30 a.m. Holy Communion.
- 22 Thursday, 2.15 p.m. Mothers' Union.
- 25 **Sixth Sunday after Trinity and St. James' Day.** 8 a.m. Holy Communion. 9.45 a.m. Sunday School. 11 a.m. Grammar Preparatory School Service. 7 p.m. Evensong.
- 28 Wednesday, 10.30 a.m. Holy Communion. 6 p.m. Parish Tea. 7.45 p.m. Annual Meeting.
- 29 Thursday, 8 p.m. Choir Practice.

MOTHERS' UNION

Last month a successful Musical Market was held in the Kindergarten Hall—our annual effort for the Clarendon Children's Home. The amount of £65/15/0 was raised and we would like to thank all those who so generously supported us in this effort.

Our thanks also go to Miss Dorothy Glover, Mrs. E. Schwamm and Rev. A. McDonald for the musical programme which was much appreciated.

Mr. Elmore of the staff at Cosgrove Park will be guest speaker at the next meeting on Thursday, 22nd July, at 2.15 p.m. Mr. Elmore's subject will be Cosgrove Park Domiciliary Service.

A Corporate Communion Service will be held in the Chapel on Wednesday, 14th July, at 10.30 a.m.

SUNDAY, 1st AUGUST
AUSTRALIA-WIDE DAY OF
RENEWAL
SPECIAL SERVICES

W.C.C. NEWS

Refugee Intake was Record for Year

The number of refugees and needy migrants brought to Australia in 1964 under the ACC's refugee and world service programme was the highest since the operation started in 1950.

The Council received 9,231 arrivals during 1964, compared with 5,667 in 1963—the previous highest annual total. The Council has now brought more than 50,000 refugees and needy migrants to Australia. Finance is provided by churches all over the world, including Australia.

A full-time staff of 50, mainly in N.S.W. and Victoria, arrange for the reception, resettlement and welfare of new arrivals. Local congregations are asked to assist the integration of newcomers into the community.

Church Team to Survey Papua-New Guinea

A seven-member ecumenical team left Sydney on Sunday, 30th May, on a four-week survey or Church and Mission board work in Papua-New Guinea.

The team, the first of its kind, includes executive officers of Anglican, Methodist, Congregational, Baptist, Lutheran and Churches of Christ mission boards. Basic purpose of the tour is to enable people acquainted with one church or mission in the territory to see together the work of all the churches and missions related to the ACC.

C.M.S. MISSION BOXES

The C.M.S. Mission boxes are now due for their quarterly opening and may be handed in to Mrs. B. Proverbs or to the Clergy. The contributions from these boxes are for the extension of Christ's Kingdom outside Australia. The demand for the extension of the work of the missionary societies is greater than the giving of the Church at home will allow.

CHURCH FINANCE

The following letter was recently sent to those parishioners who are on the envelope scheme and the contents are of interest to all parishioners. Many aspects of the work of the Church are limited by the availability of money to undertake the particular work. You will note by the letter that the next Canvass will not take place until September-October. We will be organising this one ourselves which will be a great saving and this extra time allows for a thorough preparation. The following is the letter which went out on behalf of the Vestry:

Dear Parishioner,

"Just like any other family, it is very necessary from time to time that a Church should review its financial position and take some positive steps to ensure an adequate income. You will remember that about three years ago we carried out a Parish Life Campaign, one of the main aims of which was to ensure that our Church continued to receive an adequate, and if possible, increasing income.

You are one of the many parishioners who since then have been contributing regularly to St. John's. The period for which pledges were then made finished at the end of June, and normally another Stewardship Campaign would already have taken place. Last time we were assisted in the Campaign by the Department of Promotion of the Tasmanian Diocese, but as this Department is no longer functioning, the Vestry has decided that this year we should not call on outside assistance, and this decision will also save considerable expense.

However, the Campaign this year will not take place until October, partly to give us more time for preparation, but also because the Spring will be a much better time than mid-Winter, both for a Parish Function and for visiting parishioners in their homes.

To cover the intervening period up to the end of October, a small packet of envelopes is enclosed, and the Vestry hopes that you will accept these and continue with your present contributions over the next four months."

If any parishioner who is not contributing through the envelope would like to do so, a set of envelopes can be made available. One of the clergy or vestrymen would be glad to assist you in this way.

YOUTH NOTES AND NEWS

The following letter arrived at the Rectory a few days ago: "Dear Reader, We are two boys who went to Kelso Youth Camp in June this year. We had much fun under the leadership of Mr. Cowell. We also enjoyed the food which was so well prepared by Mesdames Easter, White and Cowell. We all thoroughly enjoyed ourselves and we would like more boys and girls to attend the next one whenever it may be." signed, Philip Targett and Robin Nolan.

And indeed we had a terrific week-end. The weather was excellent, though cold in the early morning. And as mentioned in the letter the meals were first-rate and we thank the ladies mentioned for looking after us all so extremely well. Also Mr. Easter and Mr. White whose good humour held out to the end in spite of lots of Arabs leaving doors open.

When will the next be? We don't really know but as soon as possible because it is obvious that these camps are enjoyed by those who attend.

Several useful ideas came from discussion amongst the young people themselves. One of these was for an after Sunday Evening Service Social Hour, once a month in the Kindergarten Room. Records, conversation, coffee and crumpets to be served. Watch for details of the first of these.

Barbecues may also be arranged for a Friday night soon so this also will be announced.

Communion Breakfasts continue and the last was very well attended. Keep up the good work and remember the Breakfast on 18th July.

WOMEN'S GUILD

The Tenth Annual Meeting of the St. John's Women's Guild was held on Thursday, 10th June, 1965, at the home of Mrs. G. Record, Ann Street. Canon H. A. Jerrim presided.

The Report and Balance Sheet was read by the secretary, Mrs. L. Palliser and the Treasurer, Mrs. D. Johnston reported a bank balance of £73/7/11.

Assistance to many functions have been given by members during the year. Meetings have shown an excellent attendance and at all times been most enjoyable.

Election of officers was as follows:

Patroness: Mrs. H. A. Jerrim; President: Mrs. T. P. White; Secretary: Mrs. L. Palliser; Treasurer: Mrs. D. Johnston.

The Guild will meet again at the home of Mrs. T. P. White, Wyett St., on Thursday, 8th July, at 7.45 p.m. Supper hostesses: Mesdames Jerrim, White and Ford.

ST. LUKE'S HOSPITAL AUXILIARY

Members of the St. John's Auxiliary met at the Hospital for their June meeting. The President, Mrs. V. C. Holyman, presided. Members discussed several functions which will shortly be held.

Mrs. Dell showed and explained plans for the Nurses' Home Extension which will be commenced soon.

The July meeting will be held in the Parish Hall on the 12th of the month. Afternoon tea hostesses: Mesdames Strickland and Good.

EVENING MOTHERS' UNION

The next meeting will be held on Tuesday, 20th July, at 8.00 p.m. It will commence with a service in the Chapel and then adjourn to the Rectory.

The Rector will be giving a talk on the "Objects of the Mothers' Union", which should be of particular interest to all members and especially to those who intend to become admitted members. All are welcome.

FLOWER ROSTER

Main Altar

July—

- 4 Mrs. M. M. Easter.
 11 Mrs. R. Watson.
 18 Miss M. Bennett.
 25 Mrs. L. R. Page.

August—

- 1 Mrs. M. Fletcher.

Chapel Altar

July—

- 4 Mrs. R. A. Watson.
 11 Mrs. E. Grueber.
 18 Mrs. W. McMahon.
 25 Mrs. T. G. Cowell.

August—

- 1 Mrs. G. Crawford.

SUNDAY SCHOOL

We are delighted to report that thanks to the splendid efforts of our children and their parents and friends, a little over £62 was raised at our Eastern Market Day in June. Thus we can assure Ho Tin Yau of a continued home and education. This is most wonderful and really reflects our concern for the needs of the world. Thank you too, to the teachers who helped so much and to Miss M. Bennett, Mrs. E. Henry and Mr. R. Mattingley for helping so much to make the morning a real success.

HOLY BAPTISM

Wayne Douglas Tulloch, Elaine Judith Tulloch, Brian Thomas Kettle, Kerrie-Ann Lumbridge, David Angus Laird, Christopher Tom Charles Dominy, Susan Lynette Dowker, Elaine Glenys Bennett.

MARRIAGES

Rex Douglas Bantick and Dianne Gwendolyn Hall, William John Gunn and Margaret Florence Winspear, Kevin Stanley Knowles and Dorothy Jean Matthewson.

BURIALS

Dennis Whitfield, Tracy Lee Shaw, Lillian May Jones, William Frederick Wilson, Alice Muriel Hodges, Robert Alexander Ogilvie.

Our sincere sympathy is extended to those who have been bereaved.

YOU AND YOUR FAMILY ARE INVITED TO A

PARISH TEA

IN ST. JOHN'S PARISH HALL

ON WEDNESDAY, 28th JULY AT 6 P.M.

Minimum Donation 2/- per Adult

The Parish Tea will be followed by a film and the Annual Meeting of the Congregation at 7.45 p.m.

Please Tear off Here

We will be able to be present at the Parish Tea.

Number coming Signed

Address

R.S.V.P. by Monday, 19th July.
 The Rector, St. John's Rectory.